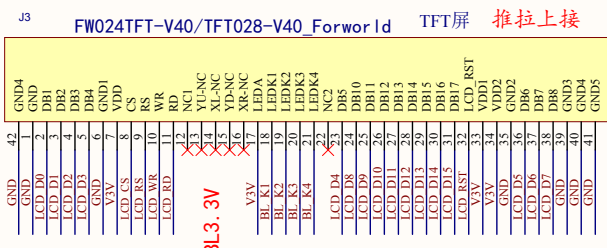


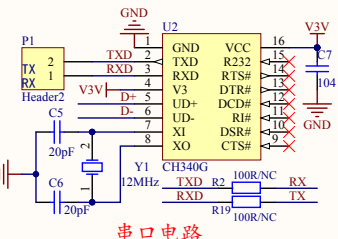
电源LDO降压电路



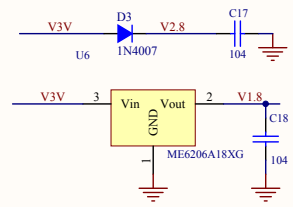
BL 3.3V



UE024QV 0.95寸 TFT屏 翻盖下接

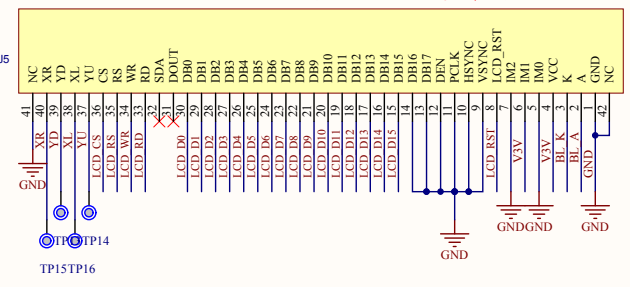


串口电路

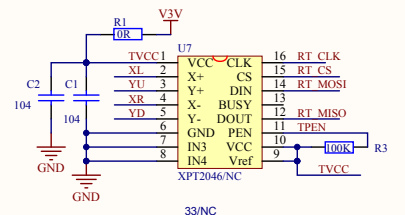


优奕视界LCM供电转换

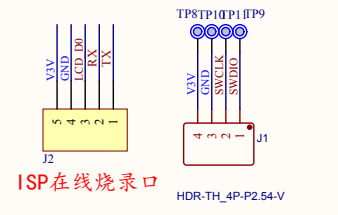
3.5TFT (JLT35002A) 晶力泰TFT屏 翻盖下接



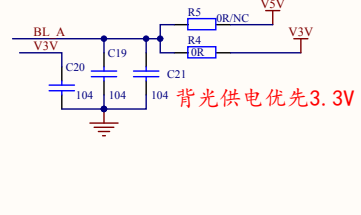
注意：LCD的接口和SPI FLASH接口，尽量参照原理图分配IO
不使用外部晶振时，C0 C1也可做IO口使用



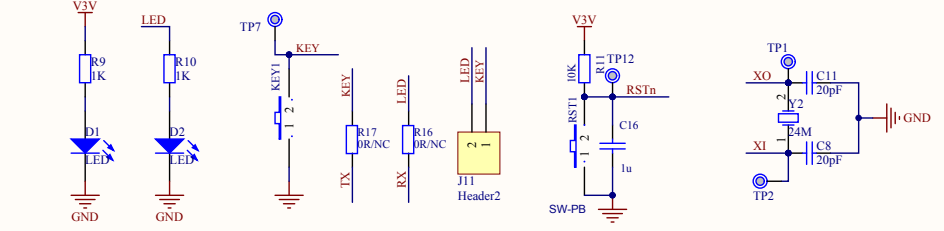
电阻触摸转SPI转换电路



ISP在线烧录口

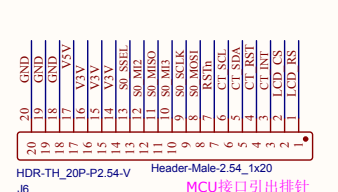


背光供电优先3.3V

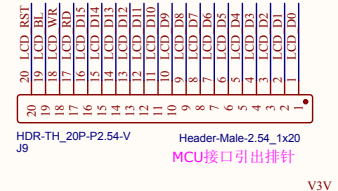


LCD_D0	1	B0/SP	B1/SPI0M3IN/PWM0A/T3/T30/OPACMPV1	48	LCD_D1
RSTn	2	RESETn	B2/SPI0M2IN/UART2CTS/PWM0An/OPACMPV1	47	LCD_D2
S0_MI2	3	E3/SPI0M2/PWM3Bn	B3/SPI0CS/UART2RTS/PWM0B/HALL0	46	LCD_D3
S0_MI3	4	E2/SPI0M3/PWM3B	B4/I2C1DAT/SPI0MISO/UART3TX/PWM0Bn/HALL1/T2/T20	45	LCD_D4
S0_SCLK	5	A11/SPI0CLK/PWM1B/OPAVP3	B5/I2C1CLK/SPI0MOSI/UART3RX/PWM1A/T1/T10	44	LCD_D5
S0_MOSI	6	A10/SPI0MOSI/OPAVN3	B6/SPI0CLK/PWM1An/T0/T00/OPAVOUT3	43	LCD_D6
S0_MISO	7	A9/SPI0MISO/T3/T30/OPAVOUT3	B7/UART2RX/PWMBRK0	42	LCD_D7
S0_SSEL	8	A8/SPI0CS/UART1RX/OPAVOUT0	B8/UART2TX/HALL2	41	LCD_D8
SWDIO	9	A3/SPI1CS/PWM1B/SWDIO	VSS	40	GND
SWCLK	10	A2/SWDCLK	B9/T2/T20	39	LCD_D9
LCD_RS	11	A0/UART0RX/PWMBRK2/T1/T10/WAKUP	B10/T1/T10	38	LCD_D10
XI	12	A0/UART0RX/PWMBRK2/T1/T10/WAKUP	B11/T1/T10	37	LCD_D11
XO	13	C1/PWM3An/XI0	B11/UART1TX	36	LCD_D12
V3V	14	C0/PWM3A/XO0	B12/UART1RX	35	LCD_D13
GND	15	VDD33	B13	34	V3V
TX	16	E7/UART1TX/T3/T30	VDD	33	LCD_D14
RT_CS#	17	E5/UART1RX/PWM2A/T1/T10	B14/I2C0DAT/SPI1M3IN/UART1CTS	32	LCD_D15
LCD_CS	18	E4/ADC0_CH0	B15/I2C0CLK/SPI1M2IN/UART1RTS	31	LCD_RST
CT_SDA	19	A15/I2C1CLK/SPI0CLK/UART0TX/PWM2B/T3/T30/ADC0_CH1	C2/UART1TX/PWM1A	30	LCD_BL
CT_INT	20	A14/I2C1DAT/SPI0MOSI/UART0RX/PWM2Bn/ADC0_CH2/OPACMPV2	C3/UART1RX/PWM1A	29	SD_CS
CT_RST	21	A13/SPI0MISO/UART0RTS/PWM1A/T2/T20/ADC0_CH3/OPACMPV2	C4/SPI1CS/PWM2A/T1/T10	28	SD_MISO
V3V	23	A12/SPI0CS/UART0CTS/PWM1An/T1/T10/ADC0_CH4	C5/SPI1MISO/PWM2An/T0/T00	27	LCD_WR
SD_SCLK	24	C7/SPI1CLK/UART1TX/PWM3Bn/ADC0_CH5	D0/I2C1DAT/UART0RX	26	LCD_RD
			D1/I2C1CLK/UART0TX/T2/T20	25	SD_MOSI
			C6/SPI1MOSI/UART2RX/PWM3B/ADC0_CH6		

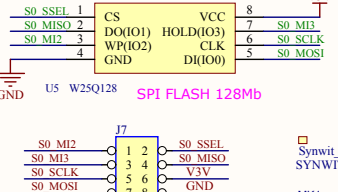
SWM19Sv3



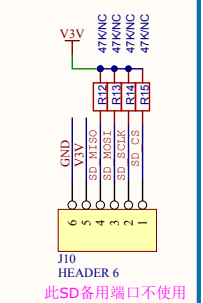
MCU接口引出排针



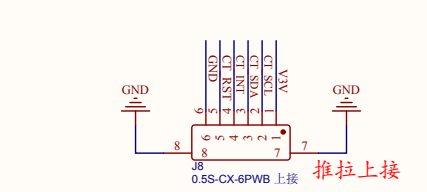
MCU接口引出排针



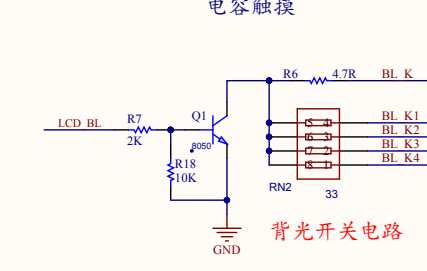
JFlash--SPI_2x4P排针



电容触摸



电容触摸



背光开关电路

SWM19S_LQFP48_SWXS_CB01_20210218

	型号	SWM19SCBT6-50_DEMO
	型号	LQFP48_19SCB01_V01
公司：广东华芯微特	绘制	Arnold_fu
地址：广东省佛山市顺德区北滘镇广东工业设计城二期西座303	校对	NO.1
地址：桂城镇桂城街道深海路17号瀚天科技城A区6号楼 1305单元		

